



A ROUNDTABLE WORKSHOP
THE EIGHT SITE AND SERVICES /
CORE HOUSE
DEMONSTRATION PROJECTS OF THE '70s

Reinhard Goethert Martin Scoppa

GATHERING DATA WHEN ACCESS IS DIFFICULT
– EXPERIMENTING WITH GOOGLE EARTH AS
SURROGATE

**A Seminar at Cairo University in 1979
documented eight demonstration
projects testing new housing strategies**

**WHAT HAPPENED TO THE
PROJECTS 35+ YEARS AFTER?
WHAT LESSONS CAN THEY
TEACH US?**

Which project started like this?



And maybe looks like this now?



And what can we learn from this?

HOW CAN WE FIND OUT?

- *Standard surveys* with detailed family interviews and *house to house assessment* ideal

BUT

- Not a good time considering the situation
- Substantial preparation, trained survey team, financial resources necessary to be credible

NEEDS CONSIDERABLE LEAD TIME

BUT STILL....

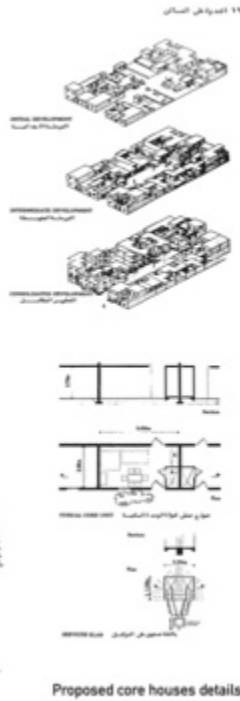
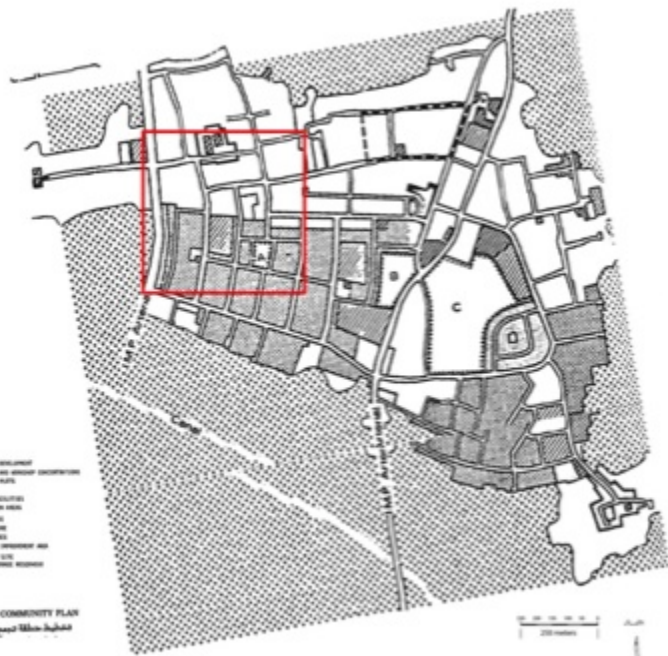
CAN WE FIND SOMETHING USEFUL QUICKLY?

Population continues to explode and cannot wait!!!!

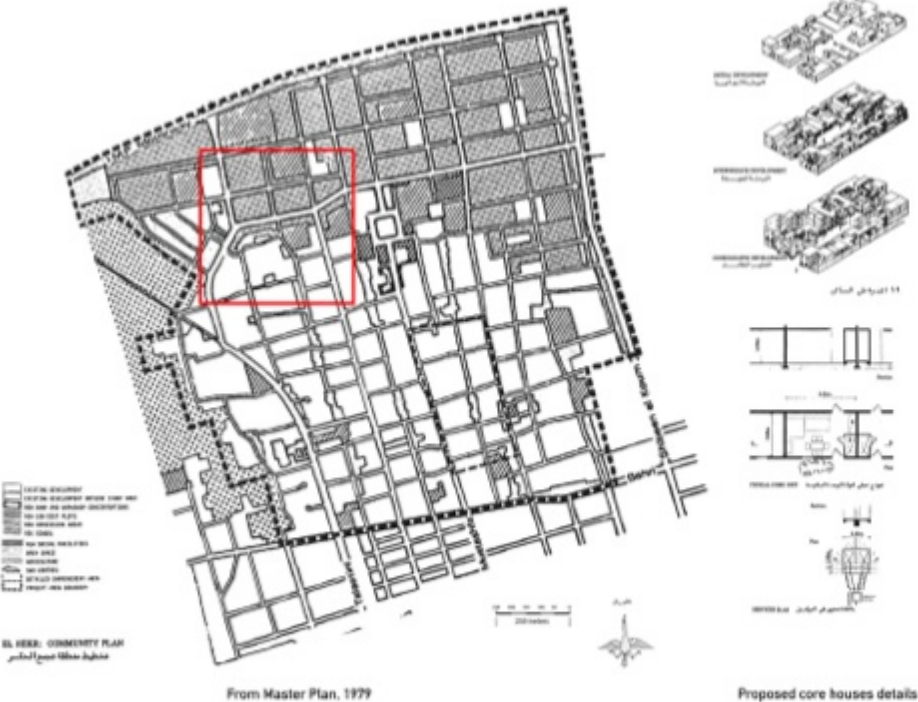
Introduction to the Eight Projects

- Ismailia
- Suez City
- Assiut
- Sadat City New Town
- 10th of Ramadan New Town
- Helwan Housing Project
- Port Said

ISMAILIA DEMONSTRATION PROJECT/ ABU ATWA



ISMAILIA DEMONSTRATION PROJECT/ EL HEKR





Hai Al- Salam during the 1980s



Thanks to Forbes Davidson and Mariam AbdelAzim



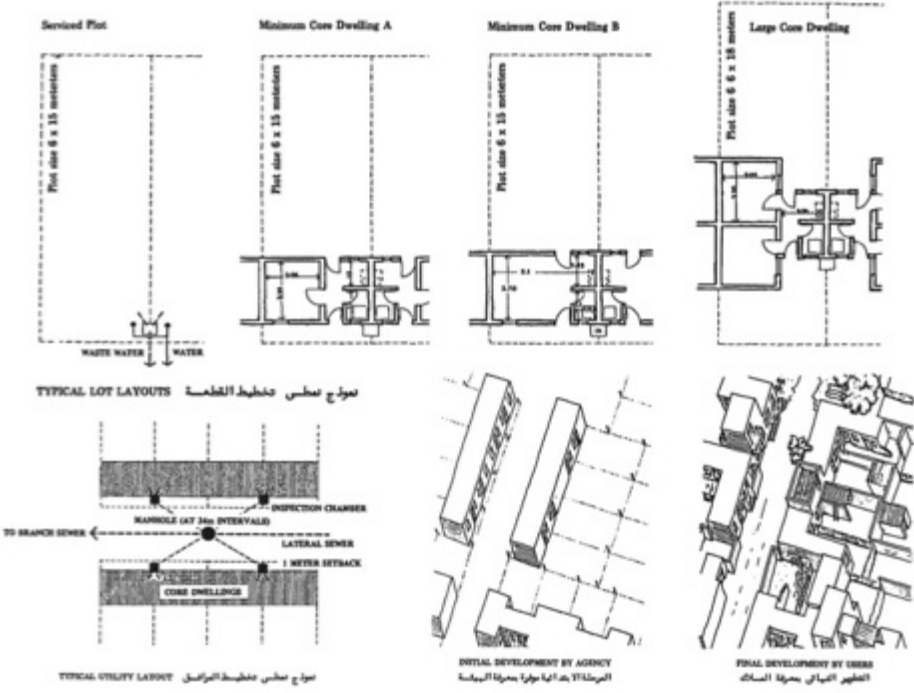
Hai Al- Salam Today

insi



Thanks to Forbes Davidson, Mariam Abdel Azeem

SUEZ DEMONSTRATION PROJECT/ CABANON



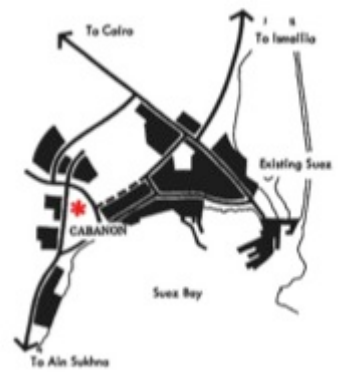
Proposed core houses details, 1979



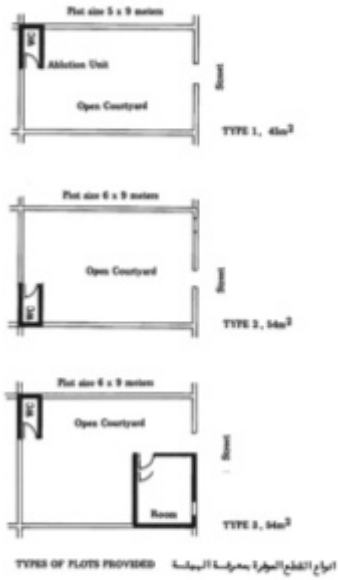
Google/Bing Image, 2014



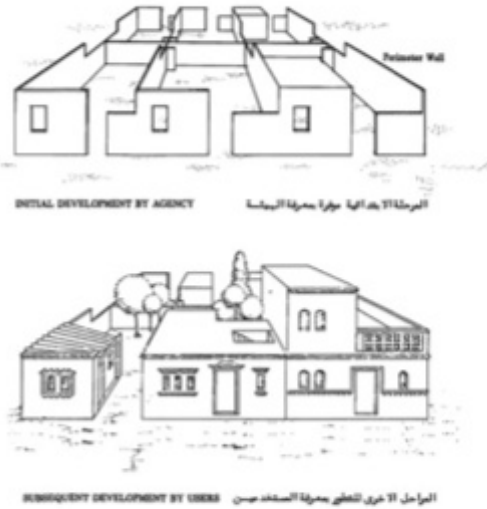
From Master Plan, 1979



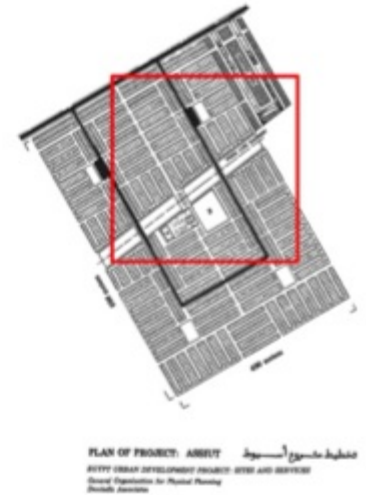
ASSIUT HOUSING PROJECT



Proposed core houses details, 1979

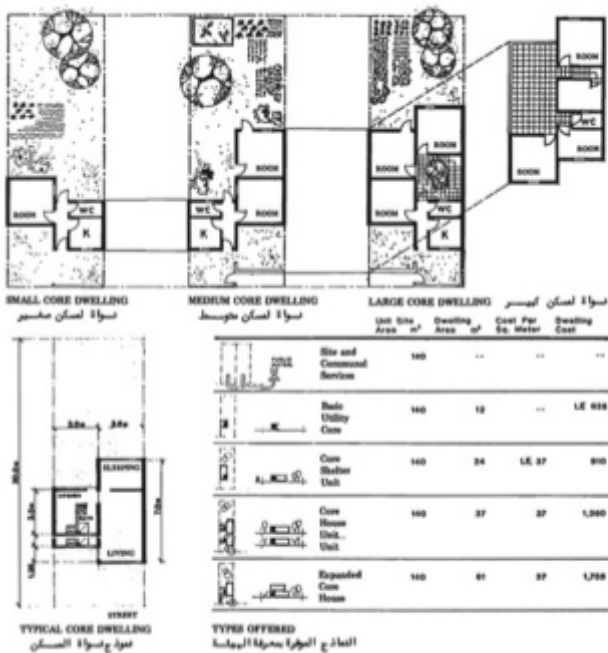


Google/Bing Image, 2014

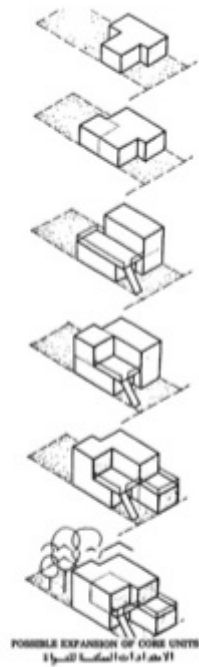


From Master Plan, 1979

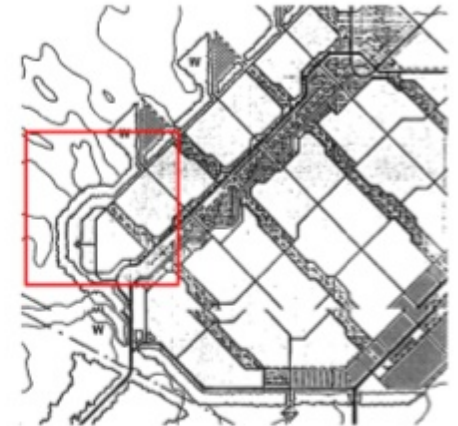
SADAT CITY CORE HOUSING PROJECT



Proposed core houses details, 1979



Google/Bing image, 2014



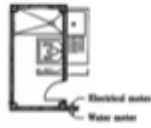
From Master Plan, 1979



HELWAN CITY HOUSING PROJECT



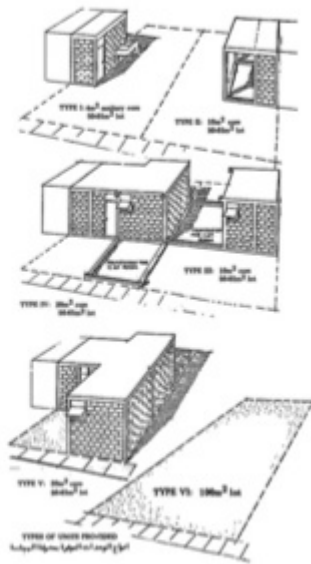
TYPICAL NEIGHBORHOOD BLOCK MODULE نموذج عملي مقترح للشقق السكنية



TYPICAL UTILITY ROOM نموذج عملي مقترح للغرفة الخدمية

Note: Shows an only preliminary building details, the design an water meter and will be placed in outside.

Proposed core houses details, 1979



TYPES OF HOUSE PROPOSED نموذج عملي مقترح للشقق السكنية



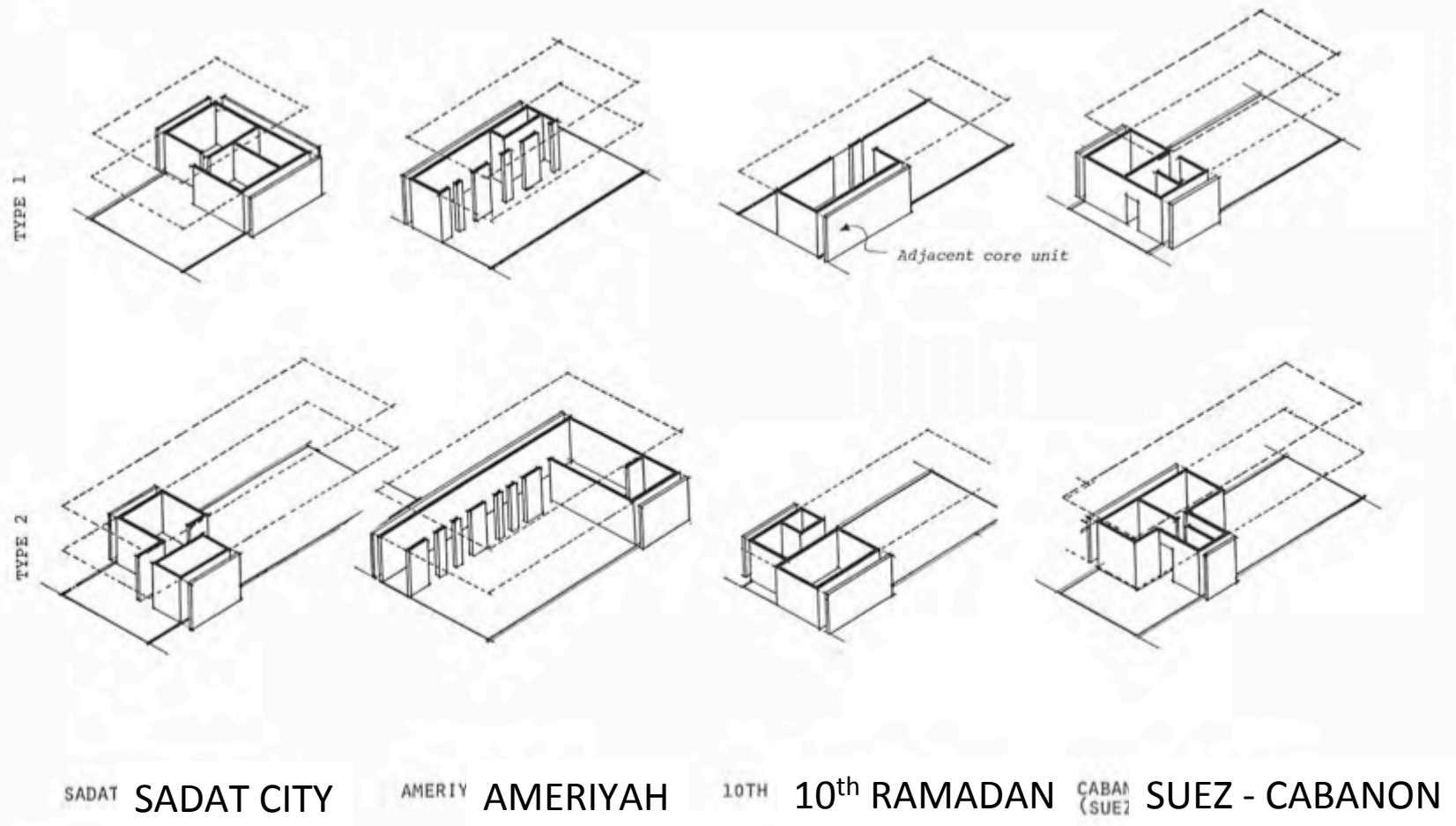
Google/Bing Image, 2014

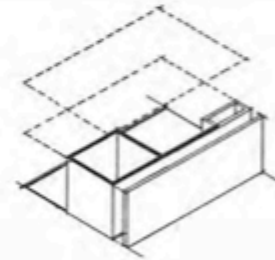
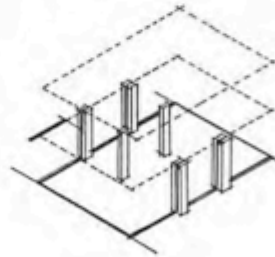
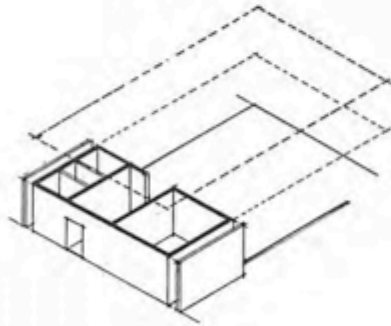
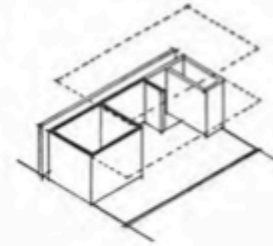
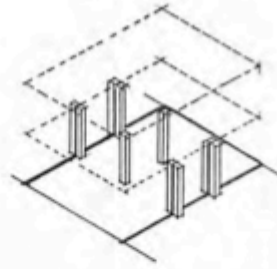
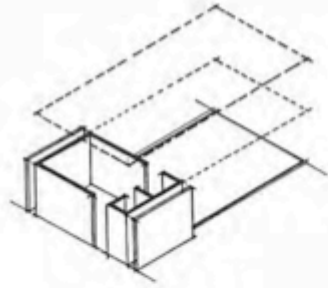
200 meters



From Master Plan, 1979

Summary of Core Units





ISMAILIA

HELWAN

ASSIUT

We experimented with Google Earth/Bing for a Quick Understanding of the Situation

Easy to do,
inexpensive,
repeatable

Can do it
remotely

Has built-in tools
(measurement of
areas, lines, etc)

BUT

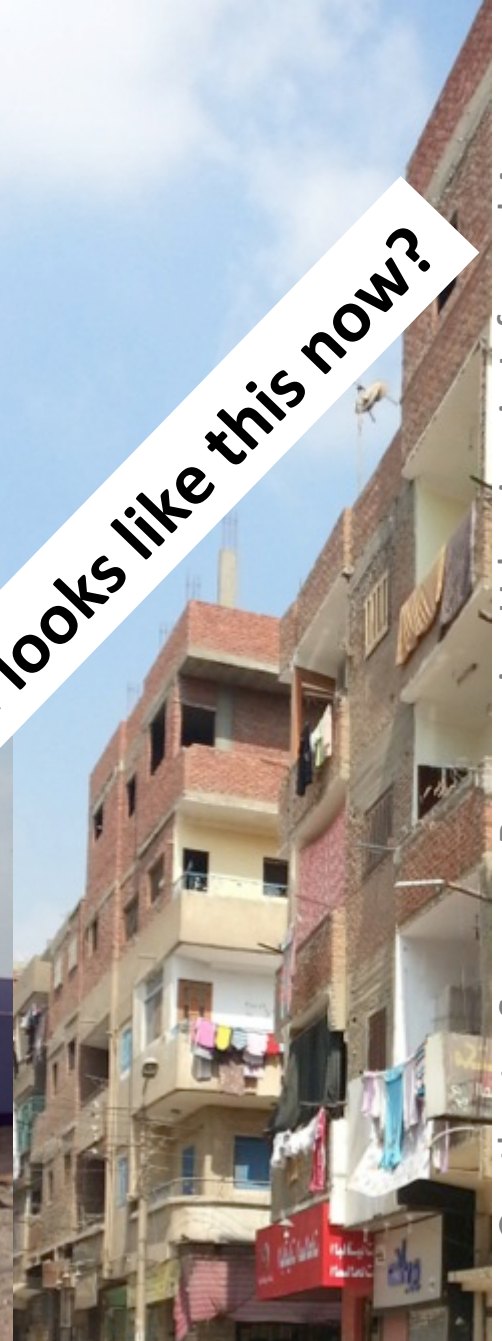
Is the quality
good enough for
useful data?

What are the
limits to the
type of data
that you can
get?

Which project started like this?



And maybe looks like this now?



And what can we learn from this?

METHODOLOGY

- Located project site from Google images
- Selected 500m x 500m reference sample
- Expanded sample to large scale
- Selected illustrative block to test
- Determined basic data from sample image



Google/Bing Image, 2014



Using data from the block in the representative segment phase complete the following table

	Total Number		Total Area (m ²)		Observations
1. What is the TOTAL NUMBER OF LOTS in the study block? What is the TOTAL AREA of the study block?	Number	Number	Number	Number	Observations
2. What is the approximate SIZE OF THE LOTS in the study area? Please consider variations in size.	Size (m ²)	Number	Size (m ²)	Number	Observations
3. What is the approximate NUMBER OF UNPAID LOTS and estimate the PERCENTAGE.	Number		Percentage of Total (%)		Observations
4. What is the approximate NUMBER OF LOTS UNDER CONSTRUCTION and estimate the PERCENTAGE.	Number		Percentage of Total (%)		Observations
5. What is the approximate NUMBER OF LOTS WITH COMPLETED ROOFING and estimate the PERCENTAGE.	Number		Percentage of Total (%)		Observations
6. What is the approximate HEIGHT OF THE BUILDINGS in the study block? Please consider variations in size.	Lowest height (meters)	Number	Typical height (meters)	Number	Observations
7. Estimated POPULATION DENSITY in study block assuming 4.4 people per unit.	People per Section				Observations
8. Estimated POPULATION DENSITY AT FULL DEVELOPMENT (20 people per block developed to optimal height)	People per Section				Observations

9. Was the project BUILT AS PLANNED?	Yes	No	Partially	Observations
10. Could you obtain BUILT DATA through this method?	Yes	No	Partially	Observations

Your Turn!

Examine selected block photo and fill in data table.

Datasheet for roundtable workshop

Using data from the block in the representative segment please complete the following table

Using data from the block in the representative segment please complete the following table							
1	What is the TOTAL NUMBER OF LOTS in the study block? What is the TOTAL AREA of the study block?	Total Number			Total Area (Hectares)		Observations
2	What is the approximate SIZE OF THE LOTS in the study area? Please consider variations in size.	Smallest		Typical		Largest	Observations
		<i>Size (sq. mts.)</i>	<i>Number</i>	<i>Size (sq. mts.)</i>	<i>Number</i>	<i>Size (sq. mts.)</i>	<i>Number</i>
3	What is the approximate NUMBER OF UNBUILT LOTS and estimate the PERCENTAGE .	Number			Percentage of Total (%)		Observations
4	What is the approximate NUMBER OF LOTS UNDER CONSTRUCTION and estimate the PERCENTAGE .	Number			Percentage of Total (%)		Observations
5	What is the approximate NUMBER OF LOTS WITH COMPLETED BUILDINGS and estimate the PERCENTAGE .	Number			Percentage of Total (%)		Observations
6	What is the approximate HEIGHT OF THE BUILDINGS in the study block? Please consider variations in size.	Lowest		Typical		Highest	Observations
		<i>Height (stories)</i>	<i>Number</i>	<i>Height (stories)</i>	<i>Number</i>	<i>Height (stories)</i>	<i>Number</i>
7	Estimated POPULATION DENSITY in study block assuming 4.4. people per story.	People per hectare					Observations
8	Estimated POPULATION DENSITY AT FULL DEVELOPMENT (All parcels in block developed to typical height)	People per hectare					Observations
9	Was the project BUILT AS PLANNED ?	Yes	No	Partially		Observations	
10	Could you obtain USEFUL DATA through this method?	Yes	No	Partially		Observations	

YOUR TURN!

YOUR TURN!



YOUR TURN!



What data can you find from Google images?

DATA NEEDED/ WANTED	Very Easy	Easy	Neutral	Hard	Very Hard
Lot boundaries					
Lot sizes					
Lot area					
Built/Unbuilt					
Under Construction/ Finished					
Number of stories (shadow)					

YOUR TURN!

**Can you find more data from
Google images?**

Some things are difficult if not impossible to see from aerial views



Thanks to Forbes Davidson, Mariam Abdel Azeem

What ALTERNATIVES to Google could you use?

PHYSICAL DATA FULL AREA	Very Easy	Easy	Neutral	Hard	Very Hard
Aerial photographs					
Drones					

YOUR TURN!

What ALTERNATIVES to Google could you use?

PHYSICAL DATA TRANSECT VIEWS	Very Easy	Easy	Neutral	Hard	Very Hard
Google street views?					
Drive-through/ walk through					
Drone fly-through					

YOUR TURN!

What ALTERNATIVES to Google could you use?

SOCIAL/ PROCESS DATA	Very Easy	Easy	Neutral	Hard	Very Hard
Individual interviews					
Cell phone responses					
Mail in surveys					
Photo essays					

YOUR TURN!

REFLECTIONS

The opportunity to actually survey the 8 demonstration projects may be at hand!

**If you get MUCH FUNDING, which methods would you choose to find information?
(ex: Gates Foundation?)**



**If you get LITTLE FUNDING, which methods would you choose to find information?
(ex: Current academic resources, volunteer students, etc.)**

YOUR TURN!





RESPONSIVE URBANISM INFORMAL AREAS

ممران المتوافق المناطق اللارسمية

The image shows a display of 20 project posters arranged in a 2x10 grid. Each poster features a title, a photograph, and a site plan. The posters are decorated with pink sticky notes. The titles of the posters are as follows:

- Row 1:
 - KALDI CITY CASE STUDY
 - KALDI CITY HOUSING PROJECT
 - KALDI CITY HOUSING PROJECT
 - KALDI CITY HOUSING PROJECT
 - KALDI CITY HOUSING PROJECT
 - KALDI CITY HOUSING PROJECT
 - KALDI CITY HOUSING PROJECT
 - KALDI CITY HOUSING PROJECT
 - KALDI CITY HOUSING PROJECT
 - KALDI CITY HOUSING PROJECT
- Row 2:
 - KALDI CITY HOUSING PROJECT
 - KALDI CITY HOUSING PROJECT
 - KALDI CITY HOUSING PROJECT
 - KALDI CITY HOUSING PROJECT
 - KALDI CITY HOUSING PROJECT
 - KALDI CITY HOUSING PROJECT
 - KALDI CITY HOUSING PROJECT
 - KALDI CITY HOUSING PROJECT
 - KALDI CITY HOUSING PROJECT
 - KALDI CITY HOUSING PROJECT

